

Development Services Department
Building Permit & Inspection Services

3.8.3.8. Water Closet Stalls (See Appendix A)

- (1)** Where a washroom is required by Article 3.8.2.3. to be barrier-free, at least 1 water closet stall or enclosure shall,
- (a) be at least 1 500 mm in width by 1 500 mm in depth,
 - (b) be equipped with a door that shall,
 - (i) be capable of being latched from the inside with a mechanism that is operable by one hand,
 - (ii) provide, when the door is in an open position, a clear opening of at least 810 mm,
 - (iii) swing outward, unless 760 mm by 1 220 mm clear floor area is provided within the stall or enclosure to permit the door to be closed without interfering with the wheelchair,
 - (iv) be provided with spring-type or gravity hinges so that the door closes automatically,
 - (v) be provided with a door pull on the outside, near the latch side of the door, and
 - (vi) be aligned with the clear maneuvering space adjacent to the water closet,
 - (c) have a water closet located so that its centerline is not less than 460 mm and not more than 480 mm from an adjacent side wall on one side,
 - (d) be equipped with grab bars that shall,
 - (i) be at least 760 mm in length and mounted at a 30° to 50° angle sloping upwards, away from the water closet with the lower end of the bar mounted 750 mm to 900 mm above the floor and 50 mm in front of the toilet bowl, or alternatively, be L-shaped with 760 mm long horizontal and vertical components mounted with the horizontal component 750 mm to 900 mm above the floor and the vertical component 150 mm in front of the toilet bowl,
 - (ii) be at least 600 mm in length mounted horizontally on the wall behind the water closet from 840 mm to 920 mm above the floor and, where the water closet has a water tank, be mounted 150 mm above the tank,
 - (iii) reserved,
 - (iv) be installed to resist a load of at least 1.3 kN applied vertically or horizontally,
 - (v) be not less than 30 mm and not more than 40 mm in diameter,
 - (vi) have a clearance of 30 mm to 40 mm from the wall, and
 - (vii) have a slip resistant surface,
 - (e) be equipped with a coat hook mounted not more than 1 200 mm above the floor on a side wall and projecting not more than 50 mm from the wall,
 - (f) have a clearance of at least 1 700 mm between the outside of the stall face and the face of an in-swinging washroom door and 1 400 mm between the outside of the stall face and any wall-mounted fixture or other obstruction, and
 - (g) when a toilet paper dispenser is provided, provide a dispenser that is,
 - (i) wall mounted,
 - (ii) located below the grab bar,
 - (iii) in line with or not more than 300 mm in front of the toilet seat, and
 - (iv) not less than 600 mm above the floor.

3.8.3.9. Water Closets (See Appendix A)

(1) Water closets for a person with physical disabilities shall,

- (a) be equipped with a seat located at not less than 400 mm and not more than 460 mm above the floor,
- (b) be equipped with hand-operated flushing controls that are easily accessible to a wheelchair user or be automatically operable,
- (c) be equipped with a back support where there is no seat lid or tank, and
- (d) not have a spring-activated seat.

3.8.3.10. Reserved

3.8.3.11. Lavatories (See Appendix A)

(1) A barrier-free washroom shall be provided with a lavatory that shall,

- (a) be located so that the distance between the centerline of the lavatory and the side wall is not less than 460 mm,
 - (b) be mounted so that the top of the lavatory or, where the lavatory is in a vanity, the top of the vanity is not more than 840 mm above the finished floor,
 - (c) have a clearance beneath the lavatory not less than,
 - (i) 760 mm wide,
 - (ii) 735 mm high at the front edge,
 - (iii) 685 mm high at a point 205 mm back from the front edge, and
 - (iv) 230 mm high over the distance from a point 280 mm to a point 430 mm back from the front edge,
 - (d) have insulated pipes where they would otherwise present a burn hazard or have water supply temperature limited to a maximum of 43° C,
 - (e) be equipped with faucet handles of the lever type without spring loading or be automatically operable and are located so that the distance from the centerline of the faucet to the edge of the basin or, where the basin is mounted in a vanity, to the front edge of the vanity, is not more than 485 mm,
 - (f) have soap dispensers that are,
 - (i) located to be accessible to persons in wheelchairs,
 - (ii) located so that the dispensing height is not more than 1 200 mm above the floor, and
 - (iii) operable with one hand.
 - (g) have towel dispensers or other hand drying equipment that are,
 - (i) located to be accessible to persons in wheelchairs,
 - (ii) located so that the dispensing height is not more than 1 200 mm above the floor, and
 - (iii) operable with one hand.
- (2)** If mirrors are provided in a barrier-free washroom, at least one mirror shall be,
- (a) mounted with its bottom edge not more than 1 000 mm above the floor, or
 - (b) Inclined to the vertical to be usable by a person in a wheelchair.
- (3)** If dispensing or hand-operated washroom accessories, except those located in toilet stalls or described in Clause (1)(f), are provided, they shall be mounted so that the dispensing height is between 900 mm and 1 200 mm above the floor.

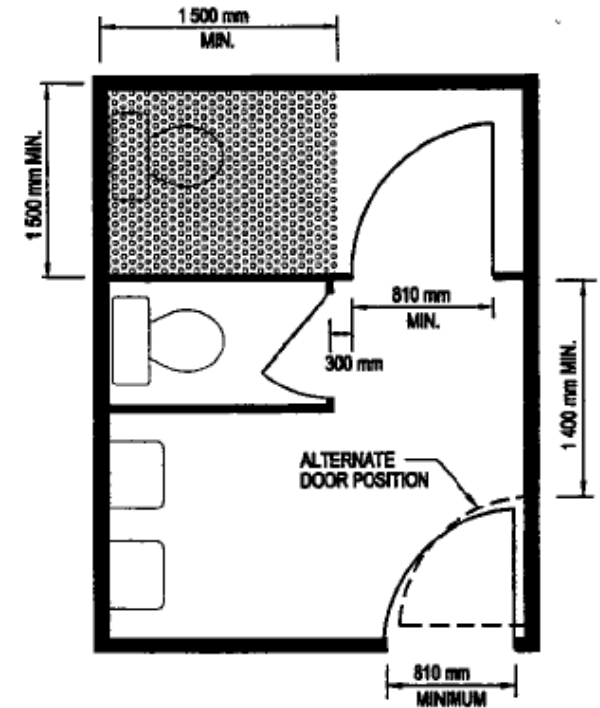
3.8.3.12. Universal Toilet Rooms (See Appendix A.)

(1) A universal toilet room shall,

- (a) be served by a barrier-free path of travel,
- (b) have a door capable of being locked from the inside and released from the outside in case of emergency and that has,
 - (i) a graspable latch-operating mechanism located not less than 900 mm and not more than 1 000 mm above the floor,
 - (ii) if it is an outward swinging door, a door pull not less than 140 mm long located on the inside so that its midpoint is not less than 200 mm and not more than 300 mm from the hinged side of the door and not less than 900 mm and not more than 1 000 mm above the floor, and
 - (iii) if it is an outward swinging door, a door closer, spring hinges or gravity hinges, so that the door closes automatically,
- (c) have one lavatory conforming to Article 3.8.3.11.,
- (d) have one water closet conforming to the requirements of Article 3.8.3.9. and located,
 - (i) so that its centerline is not less than 460 mm and not more than 480 mm from an adjacent side wall on one side, and
 - (ii) not less than 1 020 mm to the wall on the other side,
- (e) have grab bars conforming to Clause 3.8.3.8.(1)(d),
- (f) have no internal dimension between walls that is less than 1 700 mm,
- (g) have a coat hook conforming to Clause 3.8.3.8.(1)(e) and a shelf located not more than 1 200 mm above the floor,
- (h) be designed to permit a wheelchair to back in alongside the water closet in the space referred to in Subclause (d)(ii),
- (i) be designed to permit a wheelchair to turn in an open space not less than 1 500 mm in diameter, and
- (j) be provided with a door equipped with a power door operator if the door is equipped with a self-closing device.

(2) Reserved.

The following illustrations describe requirements for water closet stalls in barrier-free washrooms.



Unobstructed areas in front of the lavatory, in front of the water closet and on one side of the water closet are necessary for manoeuvrability of a wheelchair.

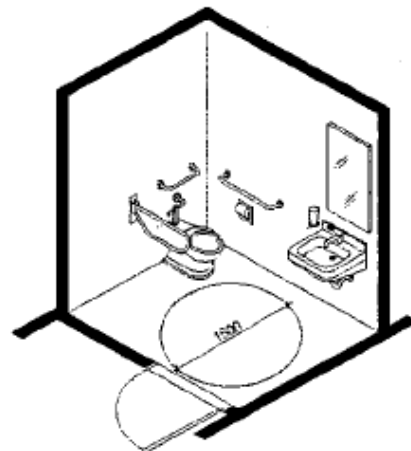


Figure A-3.8.3.12.B
Universal Toilet Room with Outward Swing Door

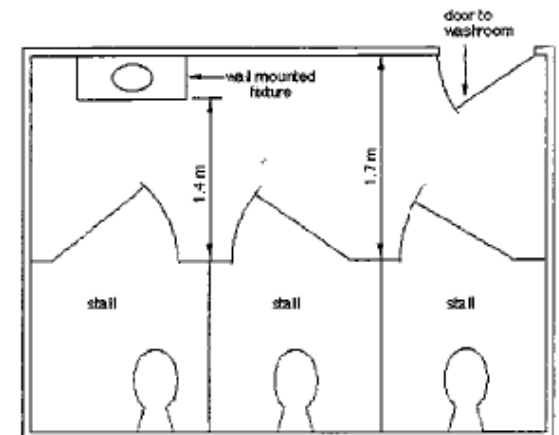


Figure A-3.8.3.8.(1)
Water Closet Stalls